

Extend Roofing and Building Envelope Life

*with Products and Services
Available through MHEC*



Solutions available through
MHEC G-29 Contract with
Weatherproofing Technologies, Inc. (WTI)

ADVANCED DIAGNOSTICS
RESPONSIVE & PREVENTIVE MAINTENANCE
PROVEN ROOF MANAGEMENT PROGRAMS
BUILDING ENVELOPE ASSESSMENTS



SOLVE

YOUR ROOFING AND BUILDING ENVELOPE PROBLEMS WITH THE MHEC PROCUREMENT SOLUTION

Turnkey Capabilities for the Building Life-Cycle

You've got a roofing or building envelope problem. You've defined the solution with the help of Tremco Roofing. Now it's time to procure products and services as quickly and economically as possible, without sacrificing quality, performance, or transparency. That's where the **MHEC** (Massachusetts Higher Education Consortium) **contract MC02-G29**, awarded to Weatherproofing Technologies, Inc. (WTI), comes in.

As a manufacturer of roofing materials since 1928, Tremco Roofing and Building Maintenance offers a breadth and depth of roofing systems for every environment, and the technical know-how to solve our customers' biggest problems. And because our affiliated construction services company WTI offers turnkey maintenance, roof management, and general contracting services, WTI/Tremco is uniquely positioned to offer MHEC members a comprehensive approach to successfully managing their roofing and building envelope assets. Tremco Roofing and WTI are part of Tremco Construction Products Group, the industry's only provider of comprehensive systems and services for all six sides of the building enclosure.



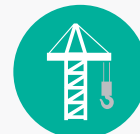
Local Field Advisors



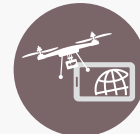
Material Expertise



Certified Contractors



Construction Management



Nationwide Service Technicians



Sustainable/Energy Solutions



Indoor Air Quality Solutions



Proactive Asset Management



Procurement Solutions

SERVICES

AVAILABLE THROUGH THE MHEC G-29 CONTRACT

WTI/Tremco has worked with school districts and public entities across the country for decades. We understand your needs and operational and budget challenges, and can partner with you to develop long-term plans to increase ROI. Solutions available through MHEC include:

TremCare® and Tremco ManagedAssets™

TremCare® and Tremco ManagedAssets™, provided by WTI, offer a range of customized, proactive roof maintenance and management programs designed to extend system performance and building life cycles. In addition to regularly scheduled inspections, housekeeping and maintenance, our advanced options include expert inventory assessment and prioritized construction services.

Tremco Performance Warranty® (TPW)

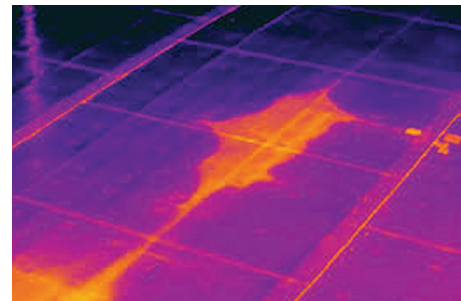
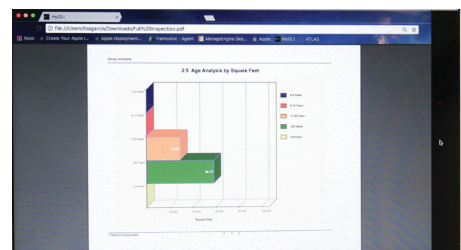
The unique Tremco Performance Warranty® (TPW) gives you the security of swift response to emergent issues combined with TremCare asset management. The program is all about proactive maintenance, inspection, and, if required, emergency maintenance.

On-Line Information System, OLI®

OLI®, our web-based On-Line Information System, provides instant access to everything you need to know about your roofs to cost effectively manage your investment, including detailed roofing inspection and maintenance data, photos, repair recommendations, and more.

Advanced Diagnostics & Moisture Surveys

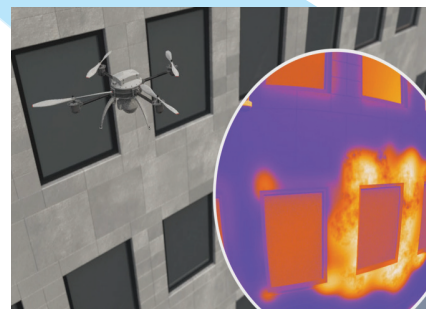
Advanced diagnostics are key to determining the true health and condition of any roof system. We use moisture meter testing, infrared analysis, and nuclear analysis to detect hidden moisture, so you can catch issues early before they create costly problems.





SkyBEAM™ Building Envelope Asset Mapping

We can even access difficult-to-map areas with SkyBEAM™ (Building Envelope Asset Mapping) using unmanned aerial vehicles (UAVs) equipped with high-definition (HD) and thermographic (infrared) cameras to locate sources of energy loss, rooftop damage, deteriorating façades, safety issues, and other potential problems.



Indoor Air Quality & HVAC

Indoor air quality (IAQ) is essential for building occupant safety and health. Through WTI/Pure Air Control Services™ we provide HVAC hygienic cleaning, sanitizing and restoration to improve HVAC system performance, occupant comfort, indoor air quality and energy efficiency.



Rooftop Safety Assessments

Rooftop safety is our highest priority. That's why we offer a wide range of non-penetrating safety products such as guardrails, hatch guards, skylight guards, crossovers, and other solutions to provide an unprecedented level of safety to everyone who steps onto a roof.



Other Services Available

Laboratory testing can help to inform your roofing decisions. TRACE (Tremco Roof Analysis Core Evaluation) offers a detailed, cost-effective way to determine the composition, construction, and condition of any built-up roof system and includes ACT® (Asbestos Core Testing), to accurately detect the presence of any asbestos fibers.

Accurate roof plans and detail drawings are essential to the success of your project. Our design professionals are experienced in creating technical specifications unique to your project's specific materials and needs. Proper detailing helps to avoid change orders and construction delays.





LOOK TO **WTI/TREMCO**

MHEC strives to offer contracts that are the best in the industry in terms of cost avoidance, product and service depth, vendor quality, choice, and terms. That's why WTI is proud to be an MHEC awarded vendor. When procuring through contract MC02-G29, MHEC members can obtain industry leading roofing and building envelope products and services from WTI/Tremco with assured quality, value, and pricing transparency. From world class diagnostics, innovative products for every environment, essential maintenance, and building envelope services, we can help you to maximize the performance life of your buildings.

ABOUT MHEC

The Massachusetts Higher Education Purchasing Consortium (MHEC) is a nonprofit purchasing consortium established in 1977 under Massachusetts State Law (Ch. 15A, § 24A) to provide efficiencies and cost savings to its members throughout New England. Public and private colleges and universities, not for profit charter, technical and vocational schools, municipalities, including elementary and secondary schools, libraries, housing authorities and not for profit educational organizations located in New England (Massachusetts, Maine, Vermont, New Hampshire, Connecticut, and Rhode Island) are all eligible for a no-cost membership. MHEC contracts are negotiated in a fair, open and competitive manner consistent with Massachusetts General Law Chapter 30B requirement.

Visit mhec.net to learn more

LONG LIVE YOUR BUILDINGS

To learn more about contract MC02-G29, "Facility Maintenance and Energy: Assessment and Software" available to MHEC members throughout New England, please visit www.mhec.net or contact your local Tremco field advisor.



Find your nearest Tremco Roofing sales representative at tremcoroofing.com/find-a-rep



TREMCO ROOFING & BUILDING MAINTENANCE | WTI 3735 GREEN ROAD | BEACHWOOD, OH 44122

MHEC.NET • TREMCOROOFING.COM • YOURROOFEXPERTS.COM • 800.852.6013

©2025 Tremco CPG Inc. All rights reserved. L-0132 / 0525. All registered trademark symbols relate to a claim of registration in the United States.