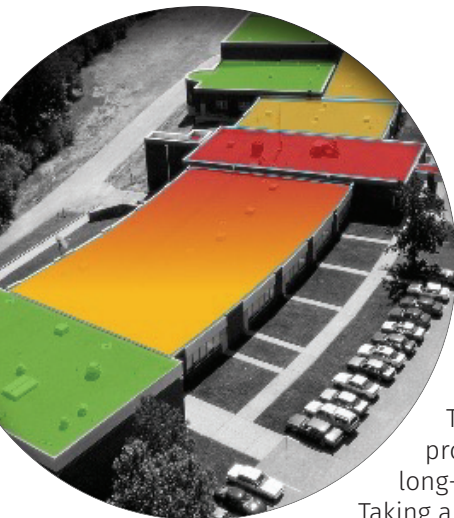


About Tremco Roofing & Building Maintenance and WTI

Tremco Roofing & Building Maintenance and affiliated construction services company **Weatherproofing Technologies, Inc. (WTI)** provide industry-leading roofing and building envelope solutions to help public facilities nationwide improve long-term performance and ROI.

Tremco Roofing and WTI are part of **Tremco Construction Products Group (CPG)**. As part of Tremco CPG, Tremco Roofing and WTI provide **comprehensive building envelope coverage** – from the foundation to the roof, including the structural elements, insulation, cladding, waterproofing, HVAC, and more – to ensure air- and water-tight building envelopes.

Solutions and services are delivered by **Field Advisors** who are among the most highly trained roofing and building envelope experts nationwide and **WTI Technicians** who provide world-class diagnostics, repair, restoration and maintenance services.



- Maintain the Good
- Restore the Marginal
- Replace Only the Failed

THE ASSET MANAGEMENT APPROACH

Tremco's integrated roof management programs reflect our commitment to delivering long-term, high-performance building solutions. Taking a proactive approach allows facility managers to establish predictable budgets and significantly extend the life of their roofing and building envelope assets.

SOLUTIONS INCLUDE:

- > Diagnostics
- > Asset Management
- > Exterior Cladding
- > Repair & Maintenance
- > General Contracting Services
- > Window Systems and Sealants
- > Roof Restoration
- > Construction Management
- > HVAC
- > Roof Replacement
- > Best-in-class Contractor Network
- > Safety Solutions

...

Streamline Procurement through the Keystone Purchasing Network In Pennsylvania, Tremco CPG/WTI solutions can be procured through the Keystone Purchasing Network (KPN) Roofing and Building Envelopes Services contract. Cooperative contracts, such as the KPN contract awarded to WTI, are publicly and competitively bid, and awards are made on the basis of best value to the lowest most responsible bidder.

KPN follows strict bidding standards and conducts bids according to the Commonwealth of Pennsylvania statutes that can be used statewide by education and government agencies. The benefits of procurement through KPN include:

- > Eliminates the need to specify, advertise, receive, evaluate, and award individual bids for each bid-required purchase.
- > Significant time and money is saved by reducing the administrative burden of the contracting process.
- > Streamlined procurement and reduced project cycle time from months to weeks.
- > Pre-competed line-item pricing for best value and budget predictability.
- > Work with proven and experienced local, best-in-class contractors and sub-contractors.



Construction Products Group

Premier Building & Maintenance Solutions

We have the ability
to provide solutions
for the entire
building envelope.

After all, WTI and
Tremco Roofing are part
of Tremco Construction
Products Group, the
industry's only provider
of comprehensive
systems and services
for all six sides of the
building envelope.

TREMCTOROOFING.COM

- ➔ **ROOF MANAGEMENT PROGRAMS** offer a range of customized, proactive roof maintenance and management plans designed to extend system performance and establish budget predictability. In addition to regularly scheduled inspections, housekeeping, and maintenance, our advanced options include expert inventory assessment and prioritized construction services.
- ➔ **DIAGNOSTICS, MAINTENANCE, AND REPAIR** comprise our proactive approach to preserving your healthy roofs and bringing the others up to standard. Our extensive diagnostics capabilities include visual inspections by experienced roofing technicians, thermal and nuclear imaging technology with moisture verification, and a full complement of laboratory tests to assess roof conditions scientifically.
- ➔ **ROOFING RESTORATION** is a cost-effective approach to saving old and failing roofs that meet specific construction and condition criteria. Qualified by laboratory analysis, roof defects are repaired before applying a new reflective and energy-efficient topcoat to restore waterproofing continuity.
- ➔ **ROOFING REPLACEMENT** options span a comprehensive line of high-performance solutions for cold-applied built-up, hot-applied built-up, modified bitumen, single-ply, coated, metal, fluid-applied, vegetated, and support for photovoltaic roofing systems.
- ➔ **HVAC SERVICES** through WTI/Pure Air Control Services™ including HVAC testing, hygienic cleaning and sanitizing, and restoration to improve HVAC system performance, occupant comfort and energy efficiency.
- ➔ **INNOVATIVE PRODUCTS** for the entire building envelope including Nudura insulated concrete forms, Prebuck engineered window and door lumber and WillSeal pre-compressed joint sealants.
- ➔ **INSULATED EXTERIOR CLADDING SYSTEMS** from Tremco CPG company Dryvit® range from stucco, limestone, and granite to metal, brick, and woodgrain finish options for a beautiful and high-performing air and weather barrier.
- ➔ **WINDOW SYSTEMS, REPAIR AND SEALANTS** solutions are designed to achieve airtight transitions from windows to the wall, and to meet high-performance energy standards throughout the building exterior.
- ➔ **SAFETY** is job one – from structural deficiencies and unprotected roof edges and hatches to walkways and skylights, we have solutions to bring your roofs up to OSHA standards.
- ➔ **GENERAL CONTRACTING AND CONSTRUCTION MANAGEMENT SERVICES** give you two options to ensure excellent project results. WTI's General Contracting consists of construction project management from the bid process through completion, including daily on-site supervision. Through our Construction Management Services program, we can take managing roofing projects off your plate and put experts in charge of the intensive, time-consuming, daily demands of administration, budgeting, scheduling, quality control, and on-site supervision.
- ➔ **THE NATIONAL COOPERATIVE CONTRACTOR NETWORK** administered by Tremco provides public entities with the ability to compliantly procure solutions through a network of highly qualified, local, best-in-class pre-qualified contractors under the KPN contract. Contractors must meet a range of qualifications, including quality, past performance, financial stability, safety, and insurance requirements.



Cooperative Contracts

TRUST IN EXPERIENCE. STRENGTH IN NUMBERS.